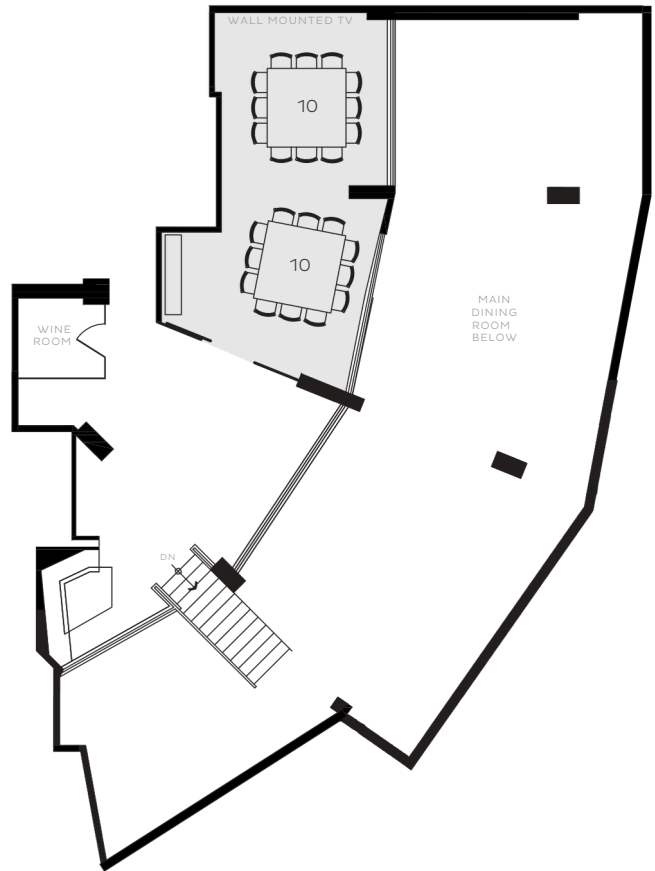
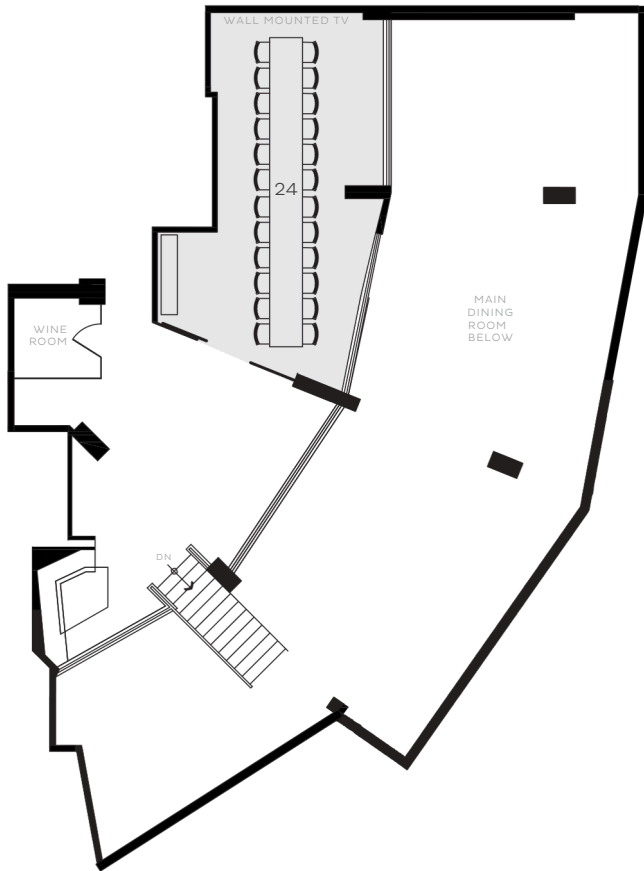


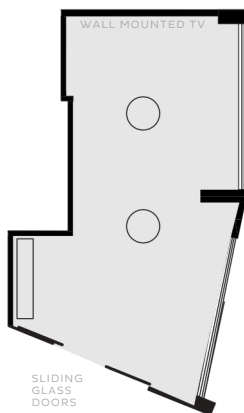
Restaurant Configuration

OPTION 1 - PRIVATE ROOM

Seated Style - up to 24 guests



Reception Style - 35 guests max.

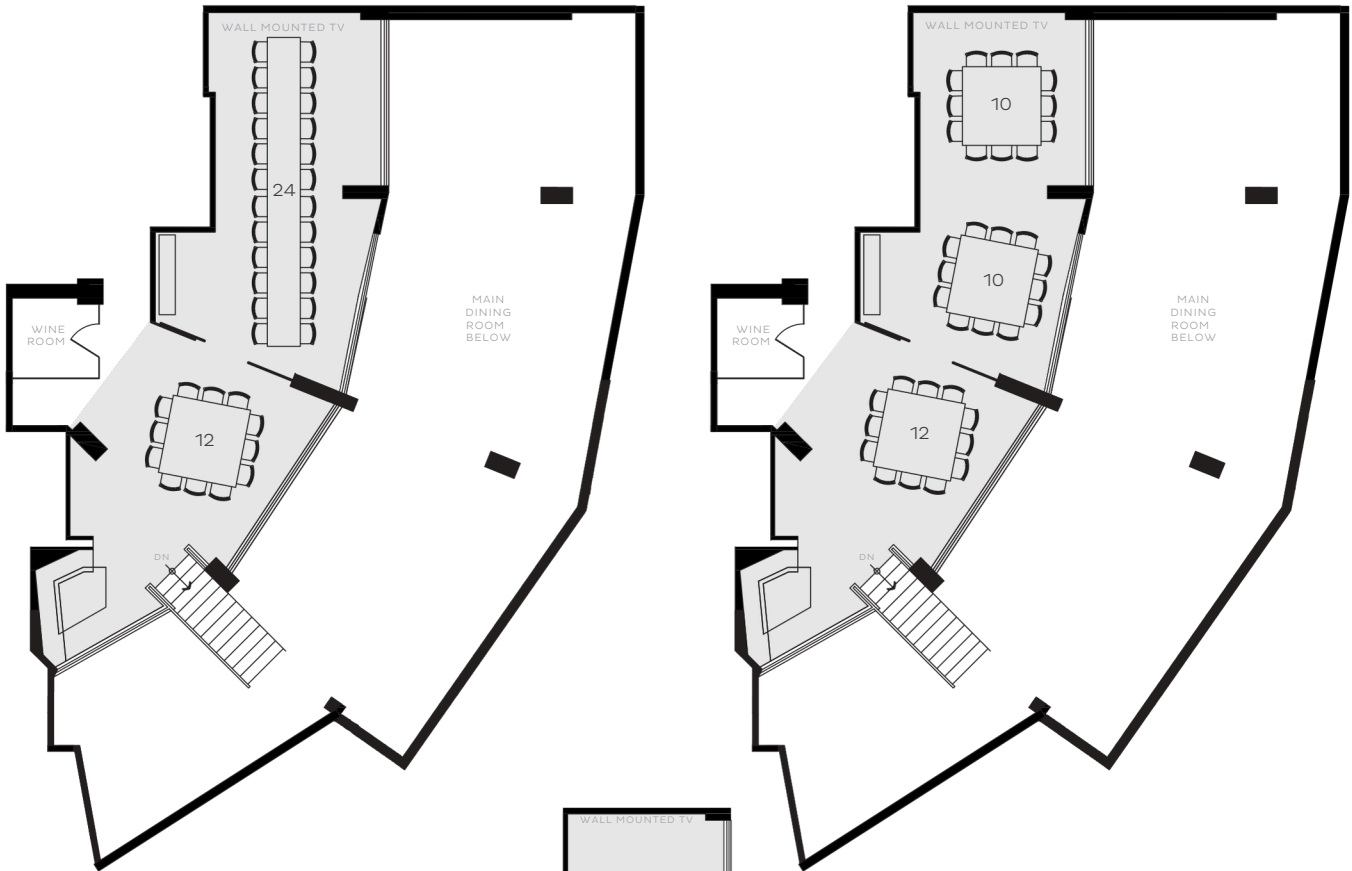


FLOOR PLANS ARE NOT TO SCALE AND LAYOUTS CAN ALTER SLIGHTLY.

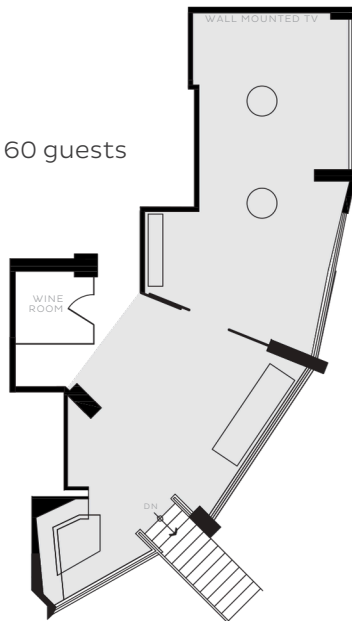
Restaurant Configuration

OPTION 2 - MEZZANINE

Seated Style – 36 guests



Reception Style – up to 60 guests



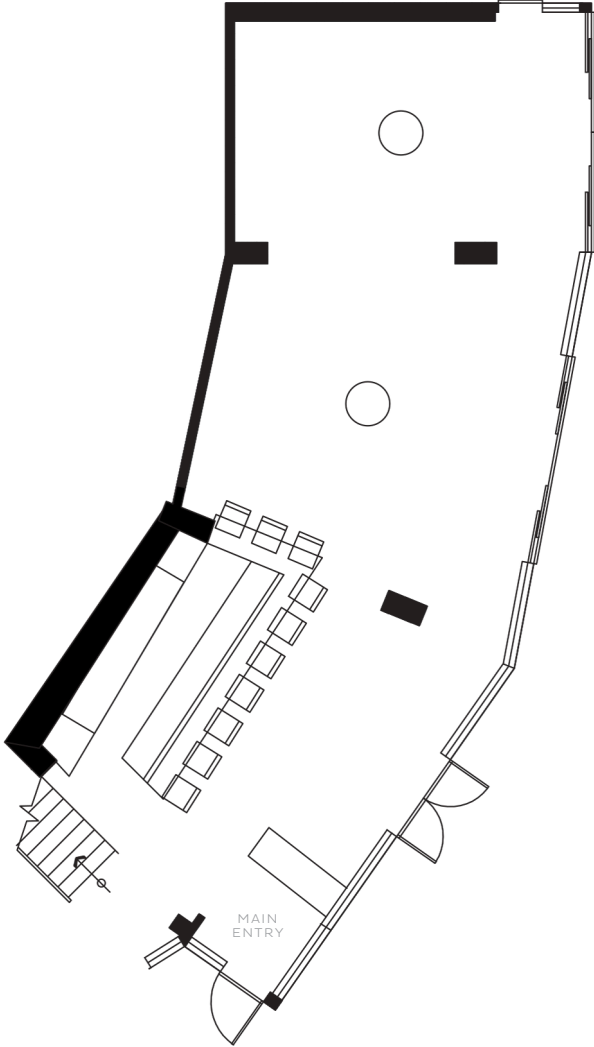
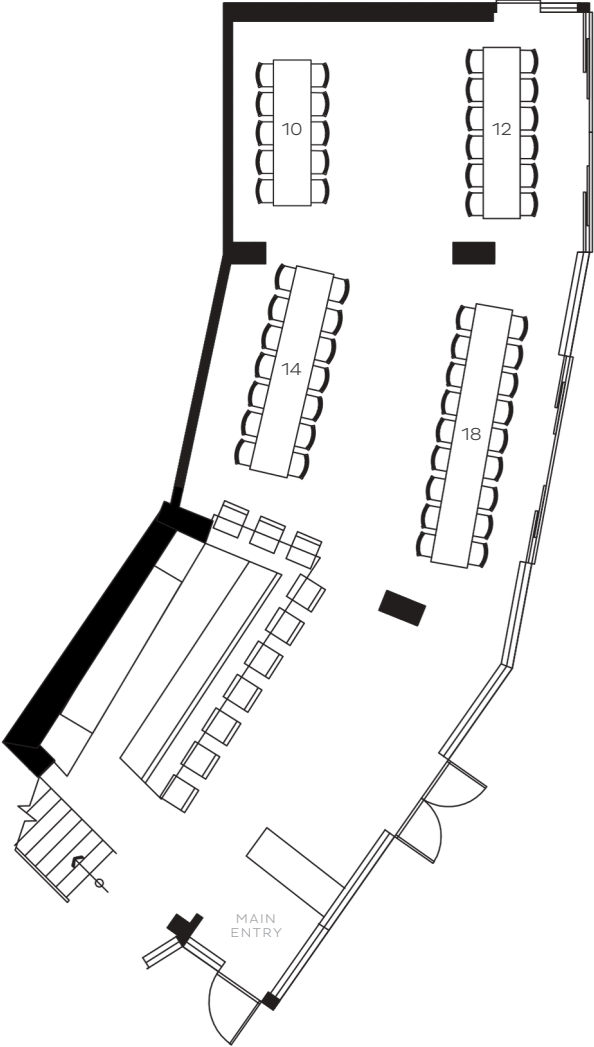
FLOOR PLANS ARE NOT TO SCALE AND LAYOUTS CAN ALTER SLIGHTLY.

Restaurant Configuration

OPTION 3 - MAIN DINING ROOM

Seated Style - up to 55 guests

Reception Style - up to 110 guests

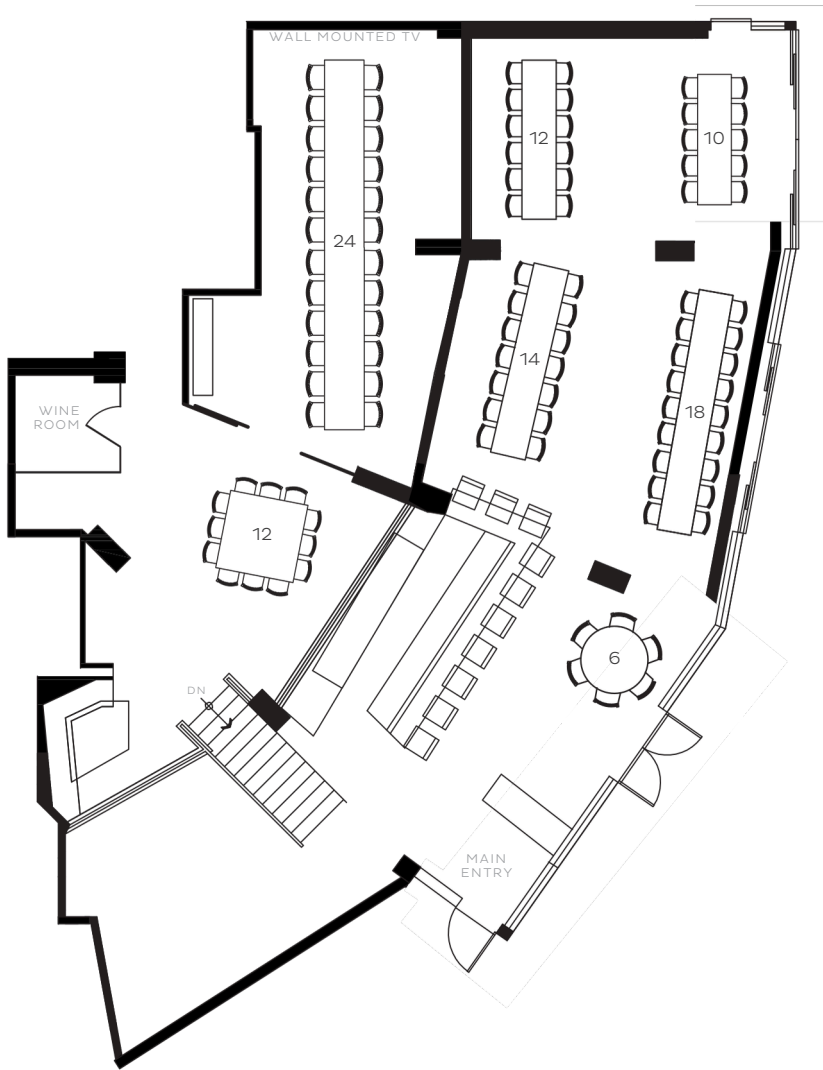


FLOOR PLANS ARE NOT TO SCALE AND LAYOUTS CAN ALTER SLIGHTLY.

Restaurant Configuration

OPTION 4 A - ENTIRE RESTAURANT

Seated Style - 96 guests

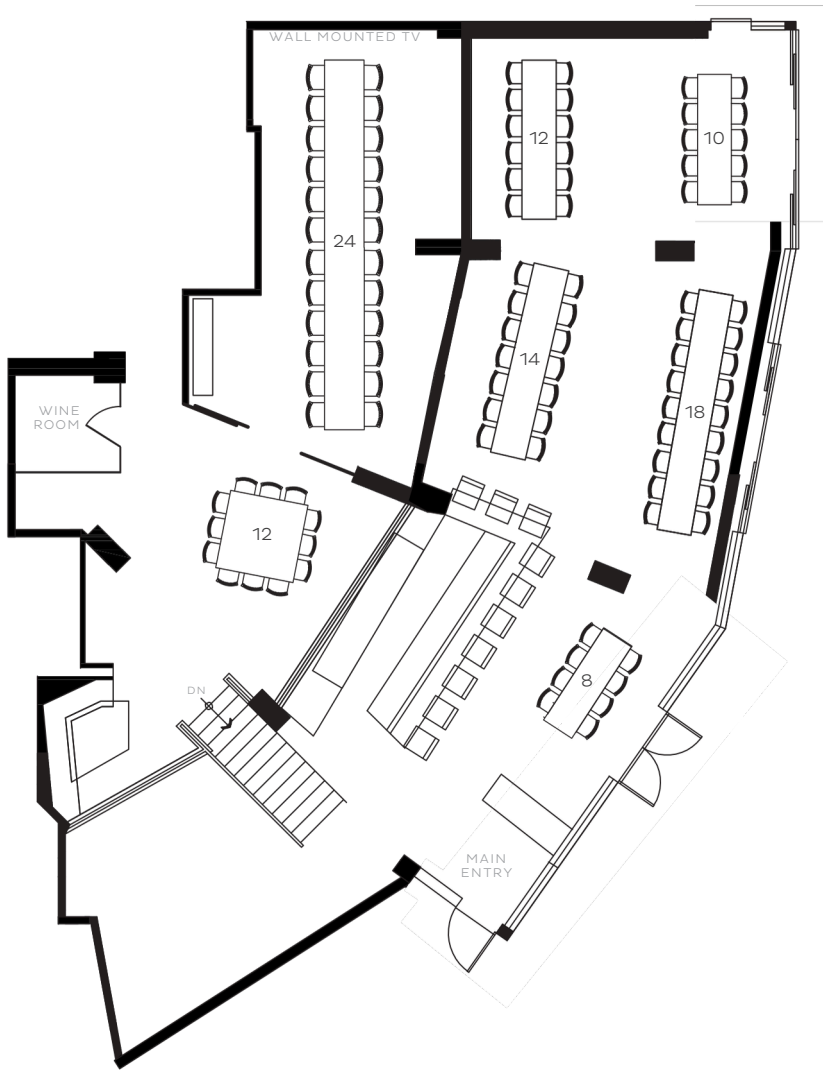


FLOOR PLANS ARE NOT TO SCALE AND LAYOUTS CAN ALTER SLIGHTLY.

Restaurant Configuration

OPTION 4 A - ENTIRE RESTAURANT

Seated Style - 98 guests

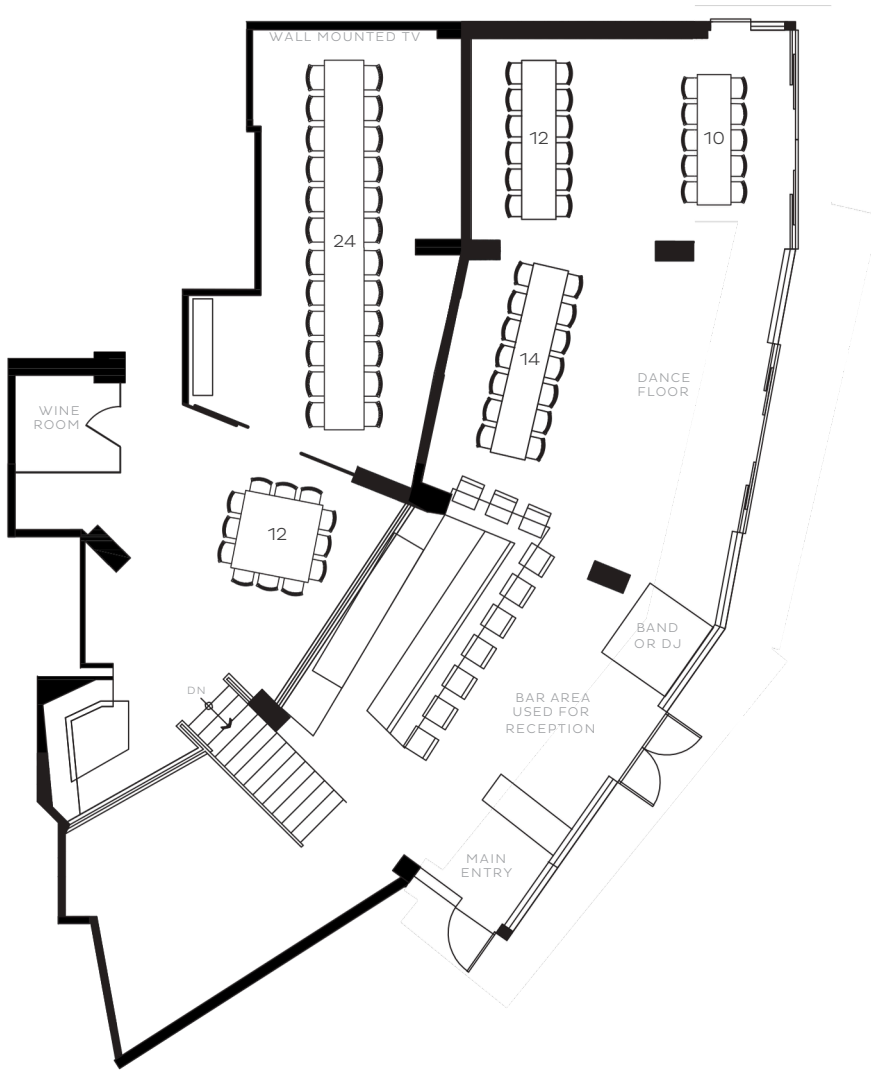


FLOOR PLANS ARE NOT TO SCALE AND LAYOUTS CAN ALTER SLIGHTLY.

Restaurant Configuration

OPTION 4 B - ENTIRE RESTAURANT

Seated Style with Dance Floor – 72 guests max.



FLOOR PLANS ARE NOT TO SCALE AND LAYOUTS CAN ALTER SLIGHTLY.